

## WHEEL LOADER WA800-3

# KOMATSU



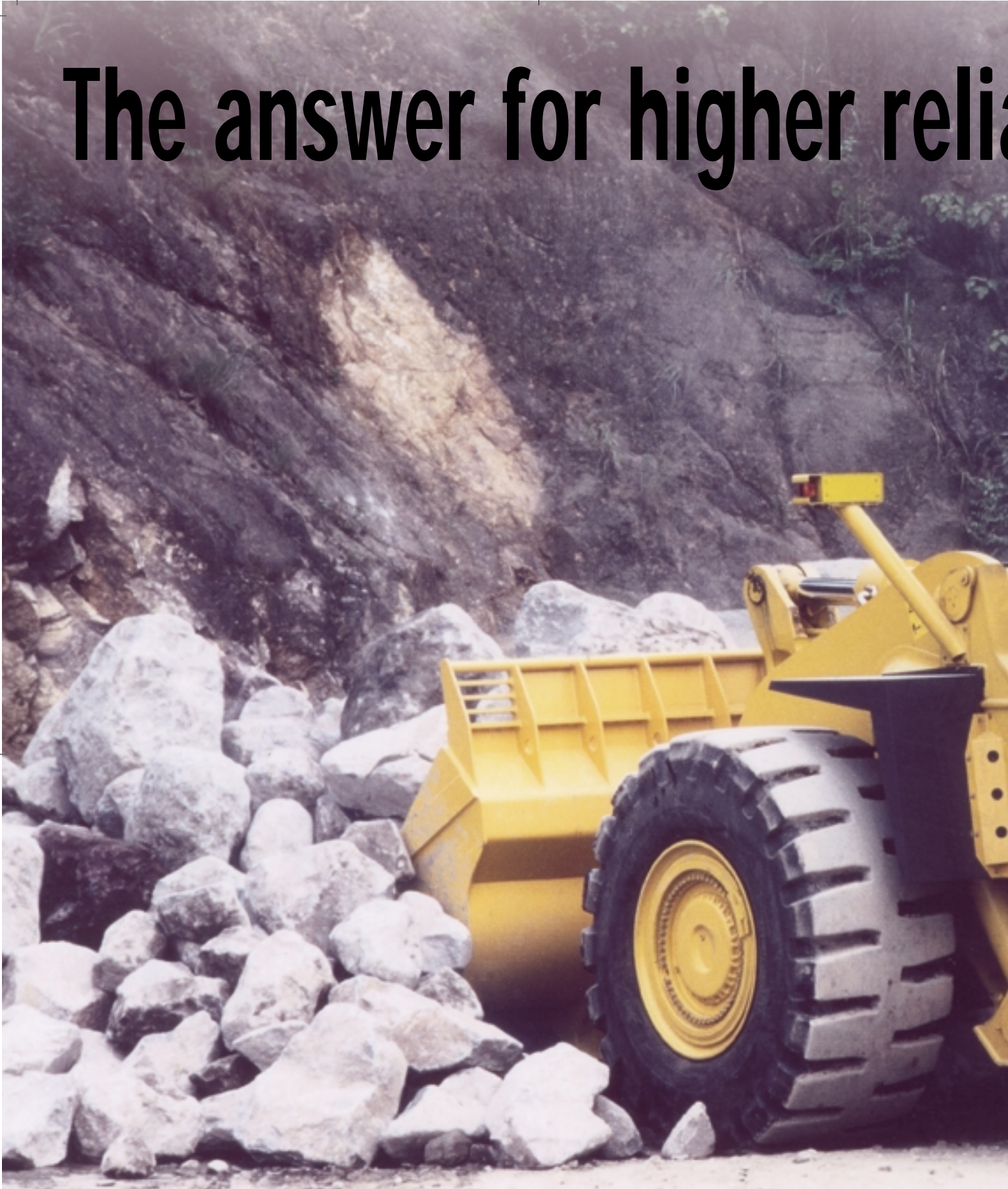
Model shown may include optional equipment

Maximum power, superior reliability and superb operator comfort. The Komatsu WA800-3 is setting new industry standards for cycle times, operator comfort and long-term return on investment

## WHEEL LOADER **WA800-3**

FLYWHEEL HORSEPOWER: **603** KW **808** HP @ 2000 rpm  
BUCKET CAPACITIES: **11.0** ~ **12.3** m<sup>3</sup> / 14.4 ~ 16.1 cu.yd  
OPERATING WEIGHT: **98300** kg / 216710 lb

# The answer for higher reliability



## Proven Power

The world/field-proven Komatsu 12-cylinder, direct-injection turbo-charged SA12V140 engine has all the capability needed for today's tough operations.

**Flywheel horsepower**

**603kW 808HP**

at 2000RPM

## Reliable Power Train

The engine, torque converter and transmission as well as the hydraulic equipment and electrical parts undergo strict quality control checks for enhanced reliability and durability.



# ability and productivity



## Durable Bucket

Komatsu buckets are manufactured using high-tensile strength steel with replaceable welded wear plates for extended bucket life. Additional strength has been added to the bucket bottom corners, side edges and spill guard ends for increased durability.

### Bucket Capacities

**11.0** m<sup>3</sup>

(14.4 cu.yd)

### Stock Pile

**12.3** m<sup>3</sup>

(16.1 cu.yd)

## High Breakout Force

Komatsu wheel loaders have hightensile steel Z-bar loader linkages for maximum rigidity and maximum breakout force. Sealed loader linkage pins extend greasing intervals.

## Excellent Stability

The WA800-3 has the widest tread in its class 3350mm(10'12") and a long 5450mm (17'11") wheelbase, for maximum machine stability.

## Auto-Greasing System (Optional)

The periodic lubrication points, except for drive shaft, are greased automatically according to the preset amount and interval. Quick change grease cartridges make replacement easy and clean.

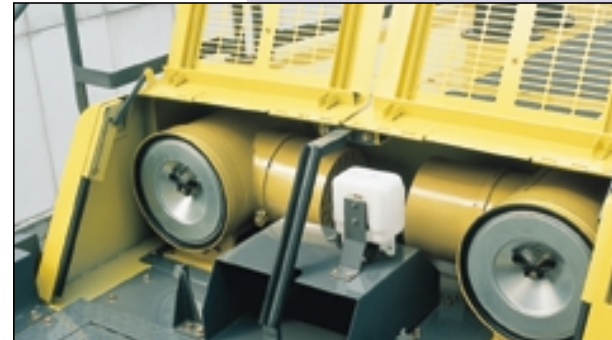
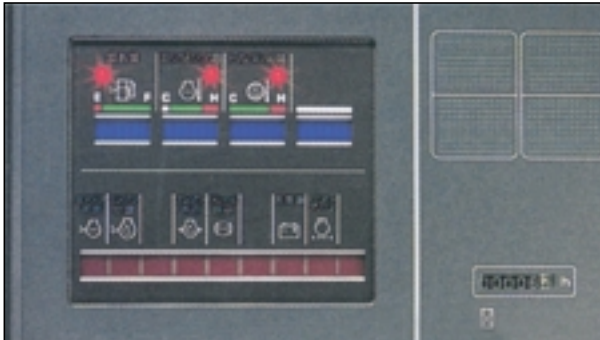
## Large dumping clearance

The WA800-3 was designed with ample dumping clearance for dump truck matching.



## Simple checks, Easy Maintenance

The main monitor and the maintenance monitor (EDIMOS II) are neatly arranged on the instrument panel for a quick, clear reading of machine functions at all times. The main monitor also has a diagnostic function.

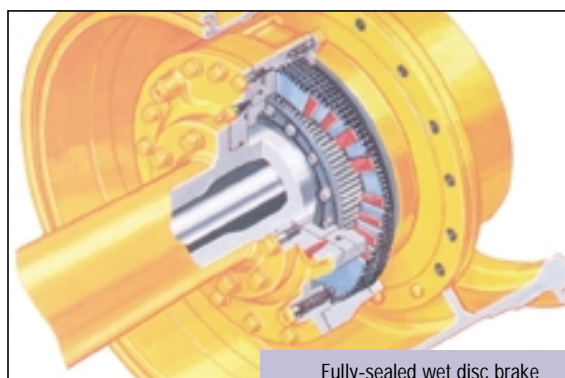


## High-Quality Paint

Most exterior plates are treated with a cationic electro-deposition undercoat and melamine baked final paint for rust resistance and longer service life.

## Maintenance-Free Braking System

Service brakes employ two hydraulically-actuated independent circuits for increased safety and are adjustment-free, fully-sealed, wet disc units, preventing intrusion of dirt and dust. Since the brake system does not use air, it provides many features such as absence of condensation, dependable braking even in cold conditions, no need for drainage, and rust free piping. What's more, charging time after engine starting is drastically shortened and pedal depressing effort reduced.



Fully-sealed wet disc brake

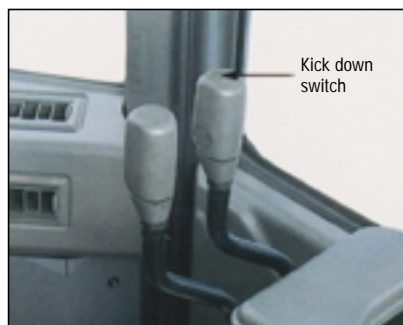


# Focus on Operator Comfort and Easy Maintenance



## Easy to use joystick steering (Optional)

A joystick steering system has been incorporated to allow steering and forward/reverse selection to be effected by wrist and finger control without the operator having to move his arm from the rest. When transmission gear shifting is set to manual, the boom lever hold and kick-down switches change to up-shift and down-shift switches respectively.



## Faster Pile-Penetration & Scooping

A kick-down switch down-shifts the transmission from forward 2nd to 1st gear, for increased rim pull and hence improved bucket filling. When the direction control lever is set to reverse, it automatically up-shifts from 1st gear to 2nd, to reduce cycle time.



## Smooth Electronic Automatic Transmission (optional)

With the electronic automatic transmission, you can always enjoy the optimum speed for the machine travelling conditions. Clutch engagement during gear shifting is so smooth that time lag and shocks are small and ride comfort is ensured.

When ascending or descending a slope or while operating, the automatic transmission can easily be set to the standard manual transmission by using the manual switch.

## Stair Light

The stair light, which illuminates the rear access stairs for about a minute, is operated by pushing a switch inside the cab, regardless of ignition key position.



## Ergonomically-Designed Controls

All controls are ergonomically designed to minimise operator fatigue. The steering wheel and instrument panel are similar to those of a car. The bucket and boom controls have PPC valves and short-stroke levers, to reduce operator effort. With the electrically-controlled transmission, direction and gearshift control levers can be finger-operated while holding the steering wheel with the same hand, allowing instant, positive direction and gearshift changes.

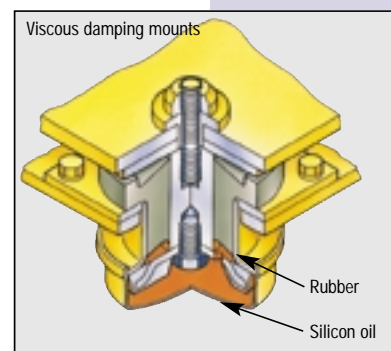
## Tiltable Steering Column & One-Glance Monitors

The steering column can be easily tilt-adjusted to the most comfortable position with one lever. Together with the two-spoke design, this guarantees better vision of the monitors.



## Low vibration & noise

The cab rests on Komatsu viscous damping mounts (rubber and silicon oil) to reduce vibration and noise. All hydraulic equipment is mounted on high-resistance rubber to further reduce vibration and noise.





### **Comfortable Operator's Seat**

The operator's seat has a reclining/air design with headrest to support the operator comfortably during long operation. Also, it is easy to adjust seat height with air suspension.

### **Roomy, Quiet Cab with Power Windows.**

The cab is large, with a comfortably spacious interior and power windows. Also, a wide viewing angle is guaranteed because the cab is pillar-less. By adopting a high-capacity air conditioner, Komatsu ensures operator comfort, no matter the exterior conditions. Other features designed with operators in mind include a lunchbox storage space.



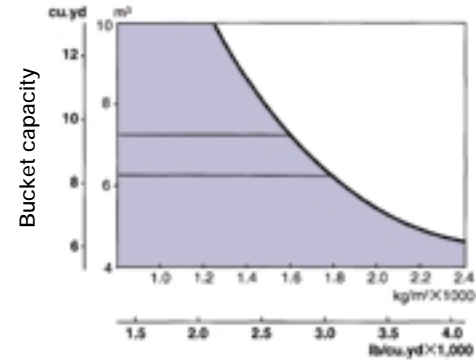


# SPECIFICATIONS

# WA800-3

## BUCKET SELECTION

	Capacity Heaped m <sup>3</sup> cu.yd	Struck	Bucket width mm ft.in	Bucket weight kg lb	Breakout force kg lb
I Excavating bucket (spade nose) with tipteeth	11.0 14.4	9.3 12.2	5045 16'7"	11430 25200	69000 152120
II Stock pile (spade nose) with teeth	12.3 16.1	10.4 13.6	5045 16'7"	12150 26790	64170 141470



Material density

Tires/buckets	Operating weight kg lb		Static tipping load kg lb			
	I	II	Straight		40° full turn	
			I	II	I	II
45/65-45-46PR(L-5)	98300	99020	57400	56680	50500	49780
	<b>216710</b>	<b>218300</b>	<b>126540</b>	<b>124960</b>	<b>111330</b>	<b>109740</b>

- All dimensions, weights and performance values based on SAE J732c and J742b standards.
- Static tipping load and operating weight shown include lubricant, coolant, full fuel tank, steel cab, ROPS canopy, air conditioner, tip type teeth and operator. Machine stability and operating weight are affected by counterweight or ballast, tire size and other attachments. Use either counterweight or ballast, not both. Apply the following weight changes to operating weight and static tipping load.

## WEIGHT CHANGES

	Change in operating weight		Change in tipping load			
			Straight		Full turn	
Remove ROPS canopy	-1385 kg	- 3055 lb	- 1220 kg	- 2690 lb	- 1180 kg	- 2600 lb
Remove steel cab	- 430 kg	- 950 lb	- 335 kg	- 740 lb	- 330 kg	- 730 lb
Install additional counterweight	+ 1600 kg	+ 3530 lb	+ 3850 kg	+ 8490 lb	+ 3400 kg	+ 7500 lb

### Specifications with High-Lift Boom

		Spade Nose with teeth
Bucket capacity	m <sup>3</sup>	10.0
Rated load	kg	18,000
Bucket width	mm	5,450 (4,760)
Dumping clearance (teeth)	mm	5,580 (5,210)
Dumping reach (teeth)	mm	2,075 (2,315)
Tire size	-	45/65-45-46PR (L-5)

() without tire guard

### Specifications with Short Boom Load & Carry

		Spade Nose with teeth
Bucket capacity	m <sup>3</sup>	14.0
Rated load	kg	22,400
Bucket width	mm	5,040
Dumping clearance (teeth)	mm	4,190 (3,820)
Dumping reach (teeth)	mm	2,450 (2,690)
Tire size	-	45/65-45-58PR (L-4)

Stone-handling version is applicable with short boom and special front attachment

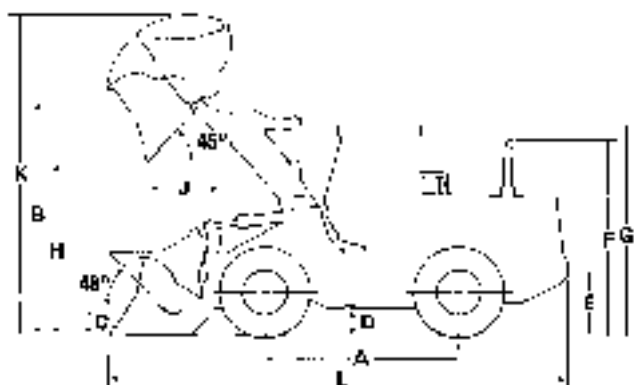
# DIMENSIONS

# WA800-3



(Unit:mm ft.in)

45/65-45 tires



Tread	3350	10'12"
Width over tires	4585	15'
A Wheelbase	5450	17'11"
B Hinge pin height, max. height	6785	22'3"
C Hinge pin height, carry position	850	2'9"
D Ground clearance	550	1'10"
E Hitch height	1300	4'3"
F Overall height, top of the stack	5080	16'8"
G Overall height, ROPS canopy	5275	17'4"

## Measured with 45/65-25 tires

	Buckets	I	II		
H. Dumping clearance, max. height and 45° dump angle	5010	16'5"	4905	16'1"	
Reach at max. height and 45° dump angle	2150	7'1"	2260	7'5"	
J. Reach at 2130 mm (7') cut edge clearance and 45° dump angle	3455	11'4"	3550	11'8"	
Reach with arm horizontal and bucket level	14380	47'2"	14530	47'8"	
K. Operating height (fully raised)	9300	30'6"	9430	30'11"	
L. Overall length	13730	45'	13880	46'6"	
Loader clearance circle (bucket at carry, outside corner and bucket)	21800	71'6"	21930	71'11"	
Digging depth (at teeth)	0°	100	3.9"	100	3.9"
	10°	605	1'11"	630	2'1"

This specification sheet may contain attachments and optional equipment that are not available in your area. Please consult your local Komatsu distributor for those items you may require. Materials and specifications are subject to change without notice.

WA800-3



## STANDARD EQUIPMENT

**Engine**

- Engine, Komatsu SA12V140,
- Alternator, 75-ampere
- Batteries, 4 x 12-volt
- Corrosion resister
- (Hard water area arrangement)
- Starting motor, 2 x 7.5-kW

**Cab**

- Air conditioner
- Air suspension seat
- Cab, steel, sound suppression
- Cigarette lighter and ashtray
- Electronic display/monitor system with failures & action codes (EDIMOS II)
- Steering wheel, tiltable

- Seat belt, 78 mm width
- Sun visor
- Windows and windshield glass tinted safety glass

**Lighting system**

- Headlights
- Stop and tails light and turn signals
- Work lights, rear

**Safety**

- Back-up alarm
- Emergency brake (by use of parking brake)
- Emergency steering, automatic
- Engine side covers
- Engine shut-off system, electric
- Roll-over protective (ROPS) canopy
- Rear view mirrors (LH & RH)

- Rear under view mirror
- Service Brakes, hydraulically actuated, wet disc type

**Others**

- Boom, standard
- Boom kickout
- Bucket positioner
- Counter weight, standard (2900 kg)
- General tool kit
- PM. Service connectors
- Rims for 45/65-45 tubeless tires (4)
- Spare parts for first service
- Vandalism protection

## OPTIONAL EQUIPMENT

**Cab**

- Heater and defroster
- Radio, AM/FM with cassette
- Steering, joy-stick type

**High lift arrangement**

- Boom for high lift
- Bucket cylinders for high lift
- Counter weight, additional for high lift (1600kg)
- Lift cylinders for high lift

**Load & Carry arrangement**

- Boom, short, for load & carry
- Counter weight for L&C (2600kg)
- Frame, strengthened

**Bucket, attachments**

- Excavating bucket, straight, 11 m<sup>3</sup>
- Excavating bucket, V-edge type, 10 m<sup>3</sup>, for high lift application

- Excavating bucket, V-edge type, 11 m<sup>3</sup>
- Excavating bucket, V-edge type, 11 m<sup>3</sup>, for heavy duty application
- Excavating bucket, V-edge type, 12.3 m<sup>3</sup>
- General purpose bucket, V-edge type, 14 m<sup>3</sup>, for load & carry application
- Tip type teeth with weld-on adapters

**Tire:**

- 45/65-(38, 46, 50, 58PR) bias tires
- 45/65-R45 radial tires

**Lighting system**

- Fog lamp
- Working lights, side
- Warning light, amber colour beacon

**Safety**

- Engine shut-off, mechanical
- Fire extinguisher

**Guard**

- In-line hydraulic filter
- Power train under guard

**Arrangements**

- Cold area arrangement (-30°C thru 40°C)
- Poor fuel (contained water) arrangement

**Others**

- Alternator, 50-ampere
- Automatic transmission shift control
- Auto greasing system
- Batteries, 4 x 12 Volt 200ah large capacity
- Control Monitoring system
- Counter weight, additional (1100kg)
- Fast fill coupler for fuel tank

## MAIN FEATURES

- The powerful Komatsu SA12V140 engine provides fuel-efficient operation
- Roomy, quiet cab with high-capacity air conditioner substantially reduces operator fatigue
- Kick-down switch on the boom control lever improves pile penetration and scooping operations
- Electrically controlled transmission enables light fingertip control of all direction/gear shift changes
- Tiltable steering wheel and adjustable seat provide operator comfort and efficiency
- Komatsu viscous damping cab mounts reduce vibration and noise
- Adjustment-free service brake accounts for higher performance and reduced downtime
- High-quality components are used for superior reliability and availability

# KOMATSU

Komatsu Europe International nv  
 Mechelsesteenweg 586  
 B-1800 VILVOORDE (Belgium)  
 Tel. (32) 2 255 24 11